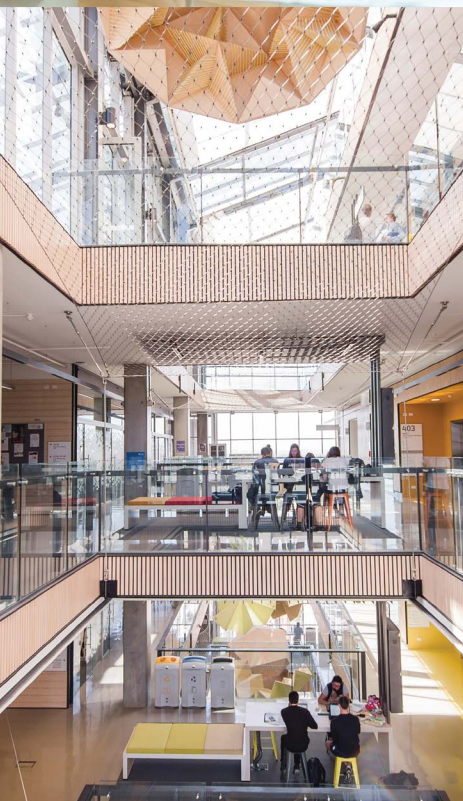


ACU English
Language Centre



Study
tours





Contents

- 03** About ACU

- 04** Why choose ACU?

- 05** ACU English Language Centre

- 06** Study tours at ACU

- 07** Sample class timetable -
General English

- 08** Excursions and cultural events
- Brisbane

- 09** Sample class timetable -
English for Academic Purposes

- 10** Excursions and cultural events
- Melbourne

- 11** Sample fee schedule - 5 week
tour (face-to-face/on campus)

- 12** Excursions and cultural events
- Sydney

- 13** Sample fee schedule - 5 week
tour (online)

About ACU

Australian Catholic University (ACU) is a dynamic institution famed for its teaching quality and research, fast-growing national and international presence, and mission to empower students with the skills to positively impact the world.

It is one of Australia's fastest growing universities, with more than 35,000 students from more than 100 countries and seven campuses located across the east coast of Australia.

Students at ACU can choose from a wide range of programs, including education and arts, health sciences, law and business, and theology and philosophy.

Students grow in a supportive environment which combines the theory of learning with the practice of work. The university's strong ties with over 200 organisations across 40 different countries gives students the opportunity for professional placements, hands-on work experience and meaningful community service.



* Greater Sydney

Why choose ACU?



IN THE WORLD

Top 2%

UNIVERSITIES

*Times Higher Education World University Rankings 2022**



Top 16

GENERATION Y UNIVERSITIES

Times Higher Education Young University Rankings 2021



Top 80

UNIVERSITIES IN ASIA-PACIFIC

Times Higher Education Asia-Pacific University Rankings 2020



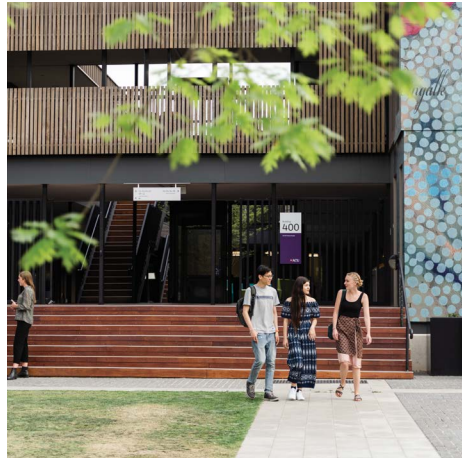
Top 10

CATHOLIC UNIVERSITIES

Based on International Federation of Catholic Universities (IFCU) members ranked on Times Higher Education World University Rankings 2021



* Percentage calculated as ACU's world rank as a proportion of the total number of universities in the world: International Handbook of Universities 2019, Palgrave MacMillan.



ACU English Language Centre

The ACU English Language Centre is located on ACU's campuses in Brisbane, Melbourne and North Sydney. It specialises in the delivery of English language courses for participants looking to prepare for university study, enhance their career opportunities, or improve their overall proficiency in the English language.

The ACU English Language Centre offers courses including:

- English for Academic Purposes
- General English
- English for the Workplace
- IELTS Test Preparation
- Tertiary Preparation Program (Health Sciences)
- Foundation Studies

The centre also offers both physical and **virtual study tours** and specialises in English plus content courses in Australian culture, pre-service teaching, continual professional development for in-service

teachers, training for academics and teachers delivering course content in English, as well as English plus Health Science and English plus Law.

Students who study at the ACU English Language Centre enjoy a university campus experience from the moment they enrol, with access to ACU facilities and events as well as opportunities to meet other students from across Australia and around the world.

Students learn in small classes and receive personalised support from highly qualified and passionate teachers with extensive experience teaching English at all levels.

ACU English programs are accredited by the Australian Government's Tertiary Education Quality Standards Agency (TEQSA) and quality assured by NEAS. ACU is a member of peak professional bodies English Australia and University English Centres Australia (UECA).



Study tours at ACU

The ACU English Language Centre offers customisable study tour packages for universities, professional organisations and groups. These study tours are held at ACU's campuses in Brisbane, Melbourne and North Sydney.



Ranging from 2-5 weeks and available via on-campus or online delivery, study tours provide participants the unique opportunity to develop their English language skills while exploring Australian landmarks and cultural activities.

The ACU English Language Centre's study tour packages include:

- Welcome pack and welcome event
- Cultural awareness component
- Internships and industry visit options
- Australian domestic student integration opportunities for on campus and online students
- Access to LEO - our online learning portal, as well as additional study material
- International Student Advisor Service (ISA), on campus and online counselling service, Wi-Fi access for on campus students, ACU Library access online and on campus, access to all activities, clubs, societies, and events for on campus students
- On and off campus cultural activities, sightseeing for on campus students
- Community engagement opportunities for on campus students
- Completion ceremony and farewell event
- End of course certificate and report card.

Excursions and cultural activities offered on each of the campuses can be found on the following pages.

Customised proposals are available on request.

Sample class timetable

GENERAL ENGLISH (FACE-TO-FACE/ON CAMPUS)*

To provide the best possible study tour experience, the minimum number of students that can be accommodated is ten and the minimum duration is two weeks.

SAMPLE TIMETABLE	WEEK 1	WEEK 2
Monday 9am – 1.30pm Break 11 – 11.30am	Introductions <ul style="list-style-type: none"> • Orientation to course • Introduction to digital delivery • Educational apps • Online learning tools • Speaking - getting to know each other 	Conversational English <ul style="list-style-type: none"> • Building conversations at home and abroad • Speaking – giving directions/ role plays Listening – a guest speaker
Tuesday 9am – 1.30pm Break 11 – 11.30am	Culture <ul style="list-style-type: none"> • Australian culture • Virtual tour • Cross cultural communication 	Cultural festivals <ul style="list-style-type: none"> • Grammar – review of tenses • Speaking – talking about local festivals. Giving and responding to advice
Wednesday 9am – 1.30pm Break 11 – 11.30am	Travel <ul style="list-style-type: none"> • Vocabulary • Speaking – sharing travel experiences • Reading - travel stories • Writing – travel blog 	Music and the arts <ul style="list-style-type: none"> • Speaking – presentation • Reading – reviews Special focus class – exam preparation
Thursday 9am – 1.30pm Break 11 – 11.30am	Work <ul style="list-style-type: none"> • Industry visit • Written reflection on the visit 	Work <ul style="list-style-type: none"> • Reading – a dream job • Speaking – the online work environment • Writing – a job application in English
Friday 9am – 1.30pm Break 11 – 11.30am	Family <ul style="list-style-type: none"> • Writing – my ancestors • Speaking – a family tree • Conversation activities with ACU students 	Farewell <ul style="list-style-type: none"> • Course reflection Conclusion and farewell

Schedule is in Australian Eastern Standard time (AEST).

* This timetable can be modified to meet the needs of each group.

Excursion and cultural events

BRISBANE FULL-DAY EXCURSIONS



Lone Pine Koala Sanctuary, Mount Coot-Tha, Mount Coot-tha Botanic Gardens.



Gold Coast, Sunshine Coast, Noosa.



South Bank, Queensland Cultural Centre, Brisbane River.

BRISBANE CULTURAL ACTIVITIES



Anne Beasley's Lookout Nudgee, Wetlands Queensland, Queensland Art Gallery and Gallery of Modern Art.



Nudgee Waterhole Reserve, Kangaroo Point, Gardens Queensland.

Sample class timetable

ENGLISH FOR ACADEMIC PURPOSES (FACE-TO-FACE/ON CAMPUS)*

To provide the best possible study tour experience, the minimum number of students that can be accommodated is ten and the minimum duration is two weeks.

SAMPLE TIMETABLE	WEEK 1 Topic: Academic culture and identity	WEEK 2 Topic: 21st century literacy
Monday 8.30am – 1pm Break 10.30-11am	Introductions <ul style="list-style-type: none"> • Orientation to course • Introduction to digital delivery • Educational apps • Online learning tools • Speaking Getting to know each other 	<ul style="list-style-type: none"> • Features of journal articles • Evaluating sources Listening – a guest speaker
Tuesday 8.30am – 1pm Break 10.30-11am	<ul style="list-style-type: none"> • Critical thinking • Reflective writing • Clauses 	<ul style="list-style-type: none"> • Industry visit • Written reflection on the visit
Wednesday 8.30am – 1pm Break 10.30-11am	<ul style="list-style-type: none"> • Compound sentences • Identifying topics and main ideas • Analysing essay questions 	<ul style="list-style-type: none"> • Recognising objectivity • Identifying author's opinion/ stance Special focus class – exam preparation
Thursday 8.30am – 1pm Break 10.30-11am	<ul style="list-style-type: none"> • Pronunciation - consonant clusters • Speaking – Giving instructions, describing a process • Intro to academic presentations 	<ul style="list-style-type: none"> • Scanning for key words • Identifying cohesive devices • Writing – a job application in English
Friday 8.30am – 1pm Break 10.30-11am	<ul style="list-style-type: none"> • Identifying context • Listening for main ideas • Conversation activities with ACU domestic students 	<ul style="list-style-type: none"> • Paragraph structure • Topic, supporting, concluding sentences

Schedule is in Australian Eastern Standard time (AEST).

* This timetable can be modified to meet the needs of each group.

Excursion and cultural events

MELBOURNE FULL-DAY EXCURSIONS



Healesville Sanctuary and Puffing Billy.



Melbourne City highlights tour.



Werribee Zoo and Werribee Park and Mansion.

MELBOURNE CULTURAL ACTIVITIES



Melbourne Museum, arcades and laneways, Galleries Victoria.



Gardens Victoria, Parliament House, Captain Cook's Cottage.

Sample fee schedule

5 WEEK TOUR (FACE-TO-FACE/ON CAMPUS)

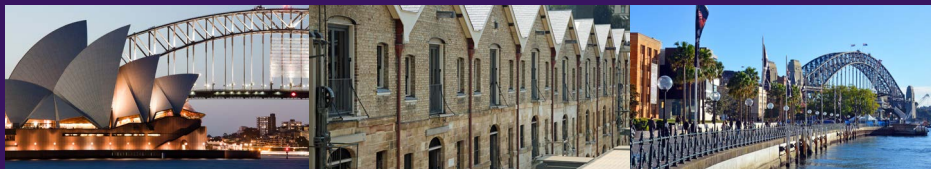
ITEM	WEEK 2
Tuition at ACU Sydney/Melbourne/Brisbane Campus <i>(5 weeks English language classes (20 hours/week))</i>	AUD \$1,520*
Airport transfers via bus	AUD \$160
Melbourne accommodation: Shared homestay	AUD \$1180
Full day Excursions x 2 (any of the above choices)	AUD \$240
Industry visits	AUD \$60
Internship placement and administration fee	AUD \$250
Career support workshops: CV development, communication skills: virtual and face-to face, interview skills, meetings, formal written communication-emailing/letters and workplace etiquette.	AUD \$0 (no charge)
<ul style="list-style-type: none"> • Auditing of ACU lectures as appropriate. • Cultural activities x 6 (see above) • Welcome and farewell event • Engagement opportunities with ACU domestic and international students 	AUD \$0 (no charge)
All Administrative fees and charges. <i>(Homestay matching fee, enrolment and registration fee, ACU administration fee and staffing costs)</i>	AUD \$380
TOTAL:	AUD \$3,790

*20% tuition fee discount for all 2022 on-campus study tours.

NOTE: The pricing and scope of services set out in this document are indicative only and do not constitute an offer capable of acceptance and do not bind the University to provide any services. We will work with you to prepare a formal proposal setting out the terms and conditions for any study tour.

Excursion and cultural events

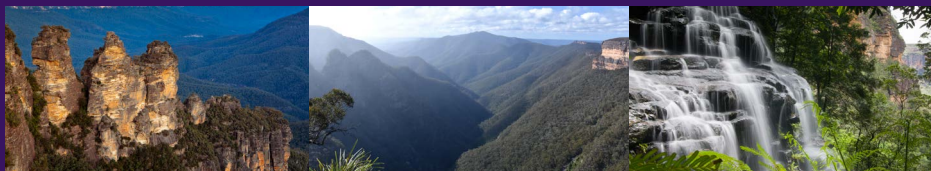
SYDNEY FULL-DAY EXCURSIONS



The Opera House, The Rocks, Circular Quay, Harbour Bridge.



Bondi Beach, Bondi Aboriginal rock art sites, Bondi Pavilion and Aquabumps Gallery.



Blue Mountains, Kanangra Lookout.

SYDNEY CULTURAL ACTIVITIES



Paddy's Market, Chinatown, Art Gallery of New South Wales.



Gardens NSW, Museums NSW, Wendy Whiteley's Secret Garden

Sample fee schedule

5 WEEK TOUR (ONLINE)

ITEM	WEEK 2
Tuition (online) - 5 weeks English language classes (20 hours/week)	AUD \$1330*
Virtual homestay experience - 3 x 45 min sessions	AUD \$80 (optional)
Career support workshops: CV development, communication skills: virtual and face-to face, interview skills, meetings, formal written communication-emailing/letters and workplace etiquette.	AUD \$0 (no charge)
<ul style="list-style-type: none"> • Virtual cultural activities • Welcome and farewell event • Engagement opportunities with ACU domestic and international students 	AUD \$0 (no charge)
All Administrative fees and charges. (<i>Enrolment and registration fee, ACU administration fee and staffing costs</i>).	AUD \$50
TOTAL:	AUD \$3,790

*30% tuition fee discount for all 2022 on-campus study tours.

NOTE: The pricing and scope of services set out in this document are indicative only and do not constitute an offer capable of acceptance and do not bind the University to provide any services. We will work with you to prepare a formal proposal setting out the terms and conditions for any study tour.

ACU English Language Centre

Brisbane
Level 1, Building 209
1100 Nudgee Road,
Banyo QLD 4014

Melbourne
Level 5, 115 Victoria Parade,
Fitzroy VIC 3065

Sydney
Level 4, Tenison Woods House,
8-20 Napier Street,
North Sydney NSW 2060

Useful websites

Download a brochure
acu.edu.au/international/library

Get to know our campuses
acu.edu.au/locations

ACU Partner Institutions
acu.edu.au/int_partnerships

Virtual study tours
[acu.edu.au/international-students/
take-a-tour/virtual-study-tour](http://acu.edu.au/international-students/take-a-tour/virtual-study-tour)

Got a question or feeling social?

Contact us

E: PathwayPrograms.VIC@acu.edu.au

W: acu.edu.au/study_english

P: +61 3 9007 0643

 facebook.com/acuinternational

 [@StudyACU](https://www.instagram.com/StudyACU)

 internationalblog.acu.edu.au

 [ACUInternational](https://www.youtube.com/ACUInternational)

Disclaimer: Australian Catholic University attempts to ensure the information contained in this publication is correct at the time of production (May, 2022). However, sections may be amended without notices by the University in response to changing circumstances or for an other reason. Check the course browser on the ACU website for the most up-to-date information. ABN 15 050 192 660