



See the latest construction progress on [webcam 1](#) and [webcam 2](#).

Upcoming and ongoing activity: How you may be affected

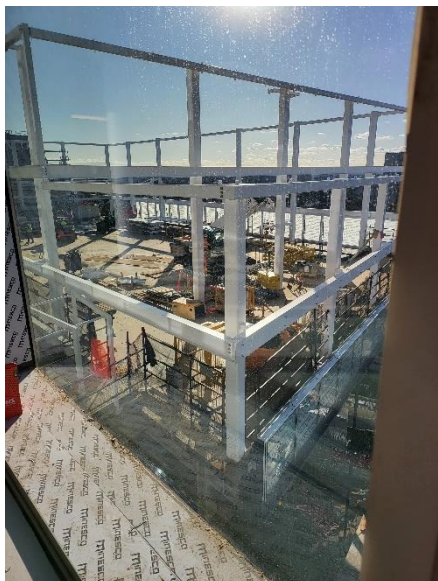
Area	Impact	Timing
Main Construction Site (STKB)	Façade panels installation is now in final stages.	August - September
Mary Glowrey Building (MGB) services upgrade	MGB services upgrade works continue. Any forecasted inconveniences to occupants will be advised through the university works notifications.	August – September
MGB Interconnections	Doorways between the STKB and MGB are being prepared for installation. Hoardings have been installed in the elevator foyers and library to enable these works to be carried out from the STKB site.	August - September
MGB Façade	Heritage conservation works to the MGB façade are ongoing, including render, paint and windows. Scaffold will start to come down on Victoria Pde and Napier St.	August - September
MGB Access	MGB North Entry reinstatement will soon commence with new fire escape stair being installed. North Entry access reopening is scheduled for late September. Note once the North entry re-opens, the South entry will be removed.	Late September
Main Construction Site (STKB)	The remaining tower crane will be removed in September. Further detail of exclusion zones will be provided through university works notifications.	September
Main Construction Site (STKB)	The fit-out in the STKB continues including lift and escalator installation, services rough-in, finishes, internal windows, tiling and painting.	Ongoing
Main Construction Site	Pedestrians should be aware of increased construction vehicle movement. Please expect changes to traffic and pedestrian routes with the assistance of traffic controllers, particularly for Victoria Pde scaffold removal and Little Victoria St Fire Escape Stair installation.	Ongoing



Please observe direction and safety signs and follow the instructions of Watpac traffic controllers.

If you wish to provide feedback, contact the team at ACUfeedback@watpac.com.au

The latest in pictures



Level 8 Sports Court Framing



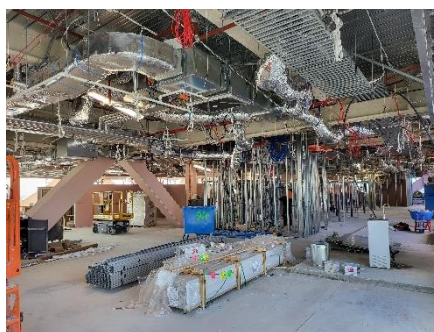
MGB Heritage Façade works



Level 12 Plantroom Louvres



Level 1 Corridor Works Progressing



Level 7 Internal Works Progressing



Little Victoria St Fire Escape Stair Installation



Please observe direction and safety signs and follow the instructions of Watpac traffic controllers.

If you wish to provide feedback, contact the team at ACUfeedback@watpac.com.au