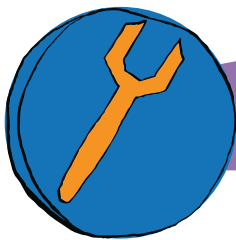


KEEP ME IN THE LOOP



TOOL 5B CLAY FACES

LINKED TO:

- Sections 4.6, 4.7, 4.8 & 5.4



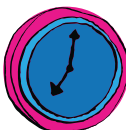
WHY?

- Clay faces can be used to help kids talk about their feelings in a non-threatening and child-directed way
- Good for working with kids who find it difficult to directly talk about their feelings



WHO WITH?

- Children aged 6 to 12 years



TIME?

- 20 mins to create the faces

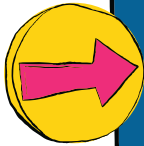


YOU'LL NEED?

- Mouldable clay (or play dough)
- 2-3 balloons per head
- Googly eyes
- Coloured wool
- Hot-glue gun



KEEP ME IN THE LOOP



WHAT TO DO:

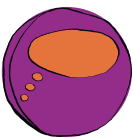
- Make play dough (use recipe in Guide 4: Make it fun) or break mouldable clay into pieces the size of a tennis ball
- Cut 2cm off the top of two normal sized balloons
- Stretch open one of the balloons and fill with the clay/dough
- Stretch open the second balloon and place the first balloon filled with clay inside so that the balloon spout of the first is pointing inwards
- Glue the opening of the second balloon together with a liberal amount of a strong adhesive (check to make sure that it can be used on rubber/latex)
- Tie some lengths of wool together at the middle of the lengths and glue to the top of the balloon head
- Adhere two googly eyes to the balloon head



SOMETHING DIFFERENT?

Instead of making one clay face that can be moulded, maybe get kids to create a series of faces that demonstrate a range of emotions.

- Get a big clump of plain clay. Break it into 6-8 pieces and explain that you're going to make faces that show different feelings.
- Workshop what these feelings might be. They could include: Happy, Sad, Angry, Bored, Frightened, Shy and Surprised
- Give each child a piece of clay and an emotion. Ask them to begin to mould the clay into the shape of a head (you might show them one as an example). Slope the neck out so that it is flat on the bottom and supports the head when it is left sitting on a table.
- Cut away parts of the clay using a knife until you can see a definite head shape.
- Use your excess clay to form ears, eyes, nose and mouth. Carefully smooth these feature into the face.
- Put some clay into a garlic crusher and squeeze to create clay hair.
- Set your face out to dry. You will know it is ready to paint when it becomes hard and no longer pliable.
- Use paints to mark out a face with the allotted emotion. Encourage the kids to be creative and descriptive.
- Put it in the sun or in a warm spot to let it dry out
- Coat the faces with a clear glue and water solution, using a clean paintbrush to apply. This will protect your clay face and let you get a lot more use out of it.



TO THINK ABOUT:

- These clay faces are a great tool. They are often available at craft shops or markets and are good to have ready for discussions with kids. Try them out with children before getting them to make their own.



HAZARD ZONES:

- Some glues can eat through the rubber/ latex so make sure that you are using one that is balloon friendly
- Adults should always use the glue gun